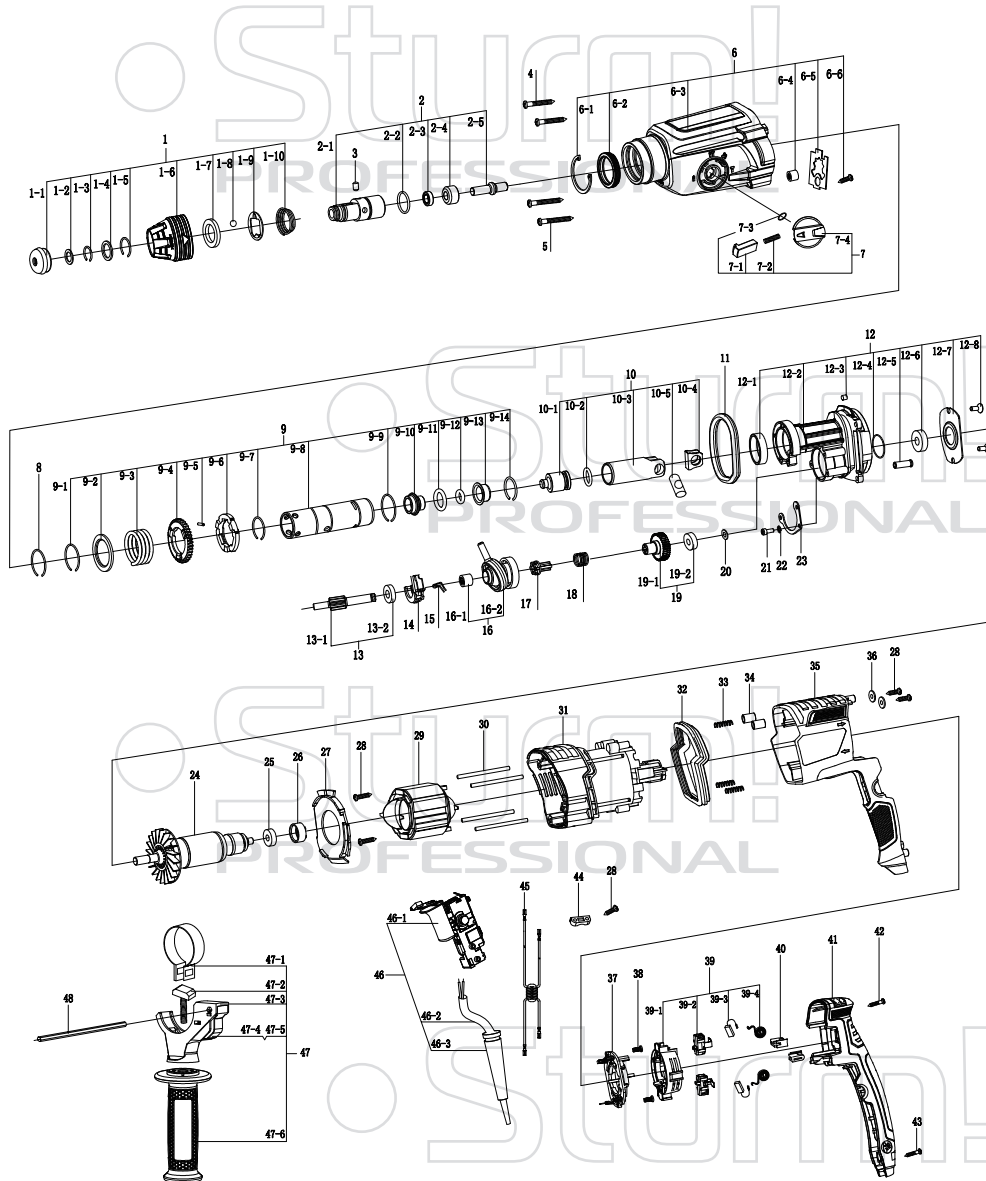


RH25988PBR



NO.	DESCRIPTION	NO.	DESCRIPTION	NO.	DESCRIPTION
1	PROTECTION SLEEVE ASSY	9-7	CIRCLIP	23	PRESSURE PLATE
1-1	PROTECTION CAP	9-8	ROTARY SLEEVE	24	ROTOR
1-2	WASHER	9-9	CIRCLIP	25	BEARING 607RS
1-3	CIRCLIP	9-10	GUIDE BUSHING	26	RUBBER BEARING SLEEVE
1-4	LOCATION RING	9-11	O-RING	27	WIND GUIDE
1-5	CIRCLIP 19×2	9-12	O-RING	28	SCREW ST3.9×16
1-6	PROTECTION SLEEVE	9-13	DAMPING BUSHING	29	STATOR
1-7	WASHER	9-14	CIRCLIP	30	PIN
1-8	STEEL BALL Ø7.14	10	CYLINDER ASSY	31	MOTOR HOUSING
1-9	WASHER	10-1	PISTON	32	DAMPING SLEEVE
1-10	SPRING	10-2	O-RING	33	SPRING
2	DRILL SLEEVE ASSY	10-3	CYLINDER	34	LOCATING SLEEVE
2-1	DRILL SLEEVE	10-4	WASHER	35	HOUSING
2-2	O-RING	10-5	PIN	36	Φ4 WASHER
2-3	OIL SEAL	11	O-RING	37	SWITCH CONTACT
2-4	THRUST RING	12	BRACKET ASSY	38	SCREW ST3.5×12
2-5	IMPACT ROD	12-1	BUSHING	39	CARBON BRUSH HOLDER ASSY
3	PIN	12-2	BRACKET	39-1	CARBON BRUSH HOLDER
4	SCREW ST4.8×35	12-3	WOOL FELT	39-2	BRUSH HOLDER
5	SCREW ST4.8×45	12-4	O-RING	39-3	CARBON BRUSH
6	GEAR HOUSING ASSY	12-5	BRACKET PIN	39-4	COIL SPRING
6-1	CIRCLIP	12-6	BALL BEARING 609RS	40	FORWARD/REVERSE BUTTON
6-2	OIL SEAL	12-7	BEARING PRESS PLATE	41	HOUSING COVER
6-3	GEAR HOUSING	12-8	SCREW M4×10	42	SCREW ST3.9×30
6-4	NEEDLE BEARING HK0709	13	MIDDLE GEAR ASSY	43	SCREW ST4.2×18
6-5	WASHER	13-1	MIDDLE GEAR	44	CORD CLIP
6-6	SCREW ST4.2×13	13-2	BEARING 699	45	INDUCTOR
7	SELECTOR KNOB ASSY	14	SHIFT FORK	46	SWITCH ASSY
7-1	LOCKING BUTTON	15	SNAP RING	46-1	SWITCH
7-2	SPRING	16	ROCKER BEARING ASSY	46-2	CORD
7-3	O-RING	16-1	NEEDLE BEARING HK0908	46-3	CORD GUARD
7-4	SELECTOR KNOB	16-2	ROCKER BEARING	47	AUXILIARY HANDLE ASSY
8	CIRCLIP	17	CLUTCH	47-1	CLAMPING BAND
9	ROTARY SLEEVE ASSY	18	SPRING	47-2	T- BOLT
9-1	CIRCLIP	19	BEVEL GEAR ASSY	47-3	CLAMP HOLDER
9-2	WASHER	19-1	BEVEL GEAR	47-4	SPRING
9-3	SPRING	19-2	BEARING 607RS	47-5	CLAMP
9-4	BIG GEAR	20	BEARING WASHER	47-6	AUXILIARY HANDLE
9-5	PIN	21	SCREW M4×12	48	DEPTH RULER
9-6	CLUTCH DISK	22	Φ4 SPRING WASHER		